

# successmaker®

## READING



## Back-to-School 2023: A New Initial Placement Experience

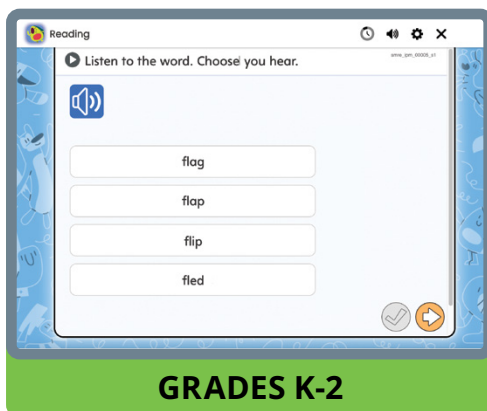
Savvas Learning Company has updated the *SuccessMaker® Reading* Initial Placement experience to provide a deeper understanding of each student's unique literacy profile.

### A Consistent K-8 Experience

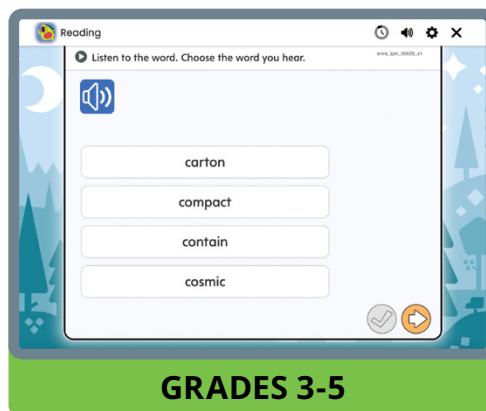
- All K-8 students will experience a two-part Initial Placement experience: 1) Word Reading, and 2) Passage Comprehension.
- The new *SuccessMaker Reading* Initial Placement experience provides greater insights into students' literacy profiles by giving educators a deeper understanding of all students' word reading skills, along with their reading comprehension. These insights help educators better understand each student's strengths and instructional needs.

### Part 1: Word Reading

Students will click an audio button and listen to a word read aloud. The student will then select the word they hear. The Word Reading portion of Initial Placement assesses a student's word reading skills.



GRADES K-2



GRADES 3-5



GRADES 6-8

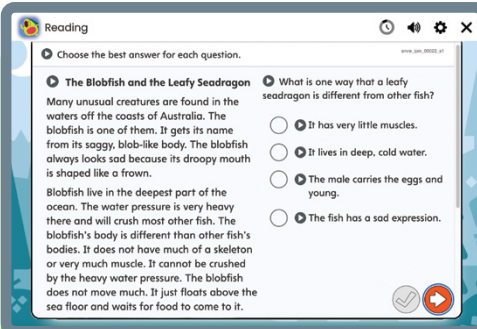
## Part 2: Passage Comprehension

A student will be routed into reading comprehension passages based on the score they receive on Word Reading.

In Levels K-2.5, students' listening comprehension is assessed. They listen to a passage, and then listen to and respond to questions. In Levels 2.5 and above, students read a passage and read and respond to questions about the passage.

As an example, a fourth grader who scores at a first grade level on Word Reading will be routed into first grade listening passages. A fourth grader who scores at a fifth grade level on Word Reading will be routed into fifth grade reading passages.

The Passage Comprehension portion of Initial Placement assesses a student's comprehension.



**Reading**

Choose the best answer for each question.

**The Blobfish and the Leafy Seadragon**

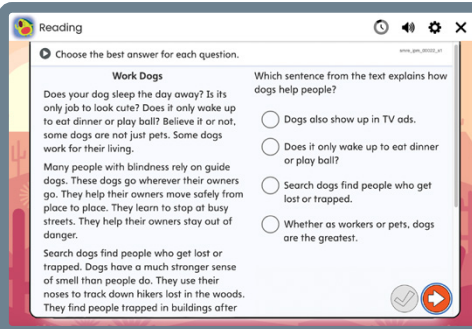
Many unusual creatures are found in the waters off the coasts of Australia. The blobfish is one of them. It gets its name from its soggy, blob-like body. The blobfish always looks sad because its droopy mouth is shaped like a frown.

Blobfish live in the deepest part of the ocean. The water pressure is very heavy there and will crush most other fish. The blobfish's body is different than other fish's bodies. It does not have much of a skeleton or very much muscle. It cannot be crushed by the heavy water pressure. The blobfish does not move much. It just floats above the sea floor and waits for food to come to it.

What is one way that a leafy seadragon is different from other fish?

- ☐ It has very little muscles.
- ☐ It lives in deep, cold water.
- ☐ The male carries the eggs and young.
- ☐ The fish has a sad expression.

**GRADES K-2**



**Reading**

Choose the best answer for each question.

**Work Dogs**

Does your dog sleep the day away? Is its only job to look cute? Does it only wake up to eat dinner or play ball? Believe it or not, some dogs are not just pets. Some dogs work for their living.

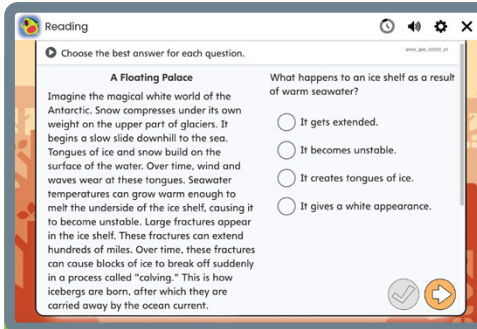
Many people with blindness rely on guide dogs. These dogs go wherever their owners go. They help their owners move safely from place to place. They learn to stop at busy streets. They help their owners stay out of danger.

Search dogs find people who get lost or trapped. Dogs have a much stronger sense of smell than people do. They use their noses to track down hikers lost in the woods. They find people trapped in buildings after

Which sentence from the text explains how dogs help people?

- ☐ Dogs also show up in TV ads.
- ☐ Does it only wake up to eat dinner or play ball?
- ☐ Search dogs find people who get lost or trapped.
- ☐ Whether as workers or pets, dogs are the greatest.

**GRADES 3-5**



**Reading**

Choose the best answer for each question.

**A Floating Palace**

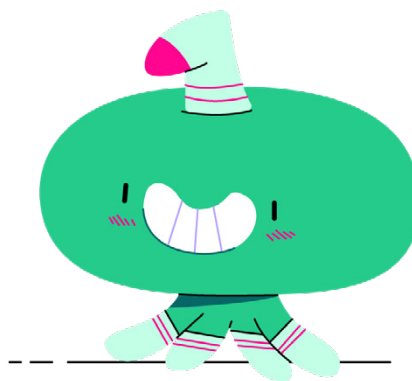
Imagine the magical white world of the Antarctic. Snow compresses under its own weight on the upper part of glaciers. It begins a slow slide downhill to the sea. Tongues of ice and snow build on the surface of the water. Over time, wind and waves wear at these tongues. Seawater temperatures can grow warm enough to melt the underside of the ice shelf, causing it to become unstable. Large fractures appear in the ice shelf. These fractures can extend hundreds of miles. Over time, these fractures can cause blocks of ice to break off suddenly in a process called "calving." This is how icebergs are born, after which they are carried away by the ocean current.

What happens to an ice shelf as a result of warm seawater?

- ☐ It gets extended.
- ☐ It becomes unstable.
- ☐ It creates tongues of ice.
- ☐ It gives a white appearance.

**GRADES 6-8**

Visit [mySavvasTraining.com](https://mySavvasTraining.com)  
for more information.



**SAVVAS**  
LEARNING COMPANY

Savvas.com  
800-848-9500

Copyright © 2023 Savvas Learning Company LLC. All Rights Reserved. Savvas® and Savvas Learning Company® are the registered trademarks of Savvas Learning Company LLC in the US and in other countries.

Join the Conversation  
@SavvasLearning



Get Fresh Ideas for Teaching  
[Blog.Savvas.com](https://Blog.Savvas.com)